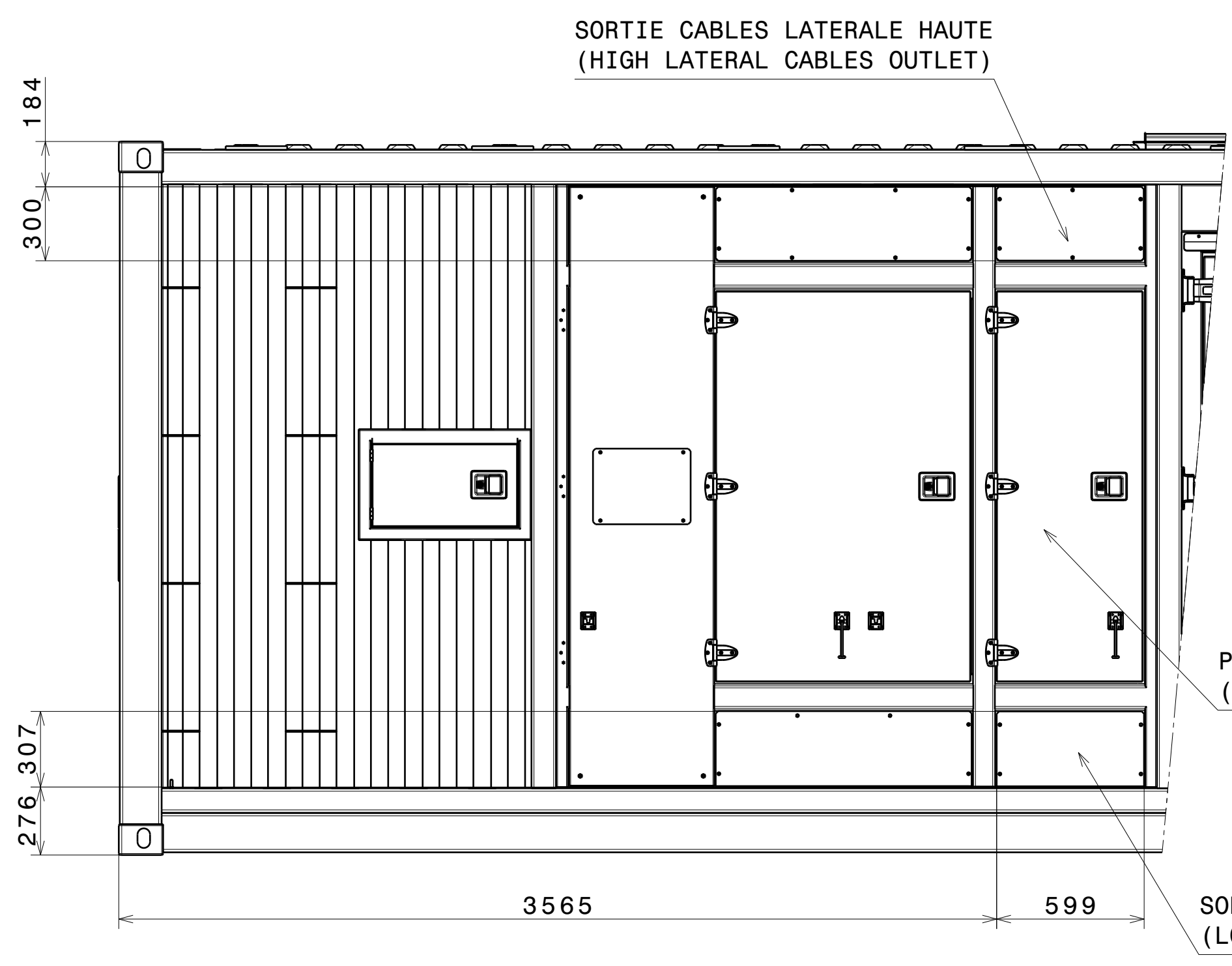
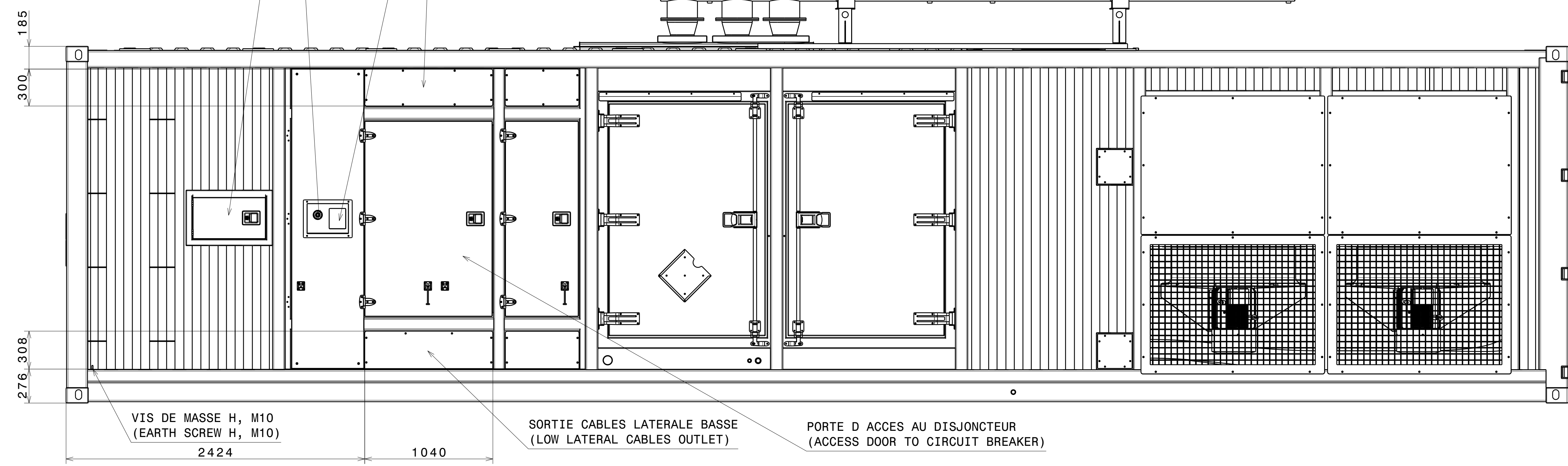


SORTIE CABLES PUISSANCE POUR MOTEUR MITSUBISHI SERIE S12R
(CABLES OUTLET FOR MITSUBISHI S12R SERIES)



Vanne police - position pour moteur Kohler
(Emergency fuel stop valve - Kohler engine position)
Arret d'urgence - position pour moteur Kohler
(Emergency stop button - Kohler engine position)

ACCES EXTERIEUR AU MODULE DE COMMANDE (OPTION)
(EXTERNAL ACCESS TO CONTROL PANEL (OPTIONAL))



SORTIE CABLES LATERALE HAUTE
(HIGH LATERAL CABLES OUTLET)

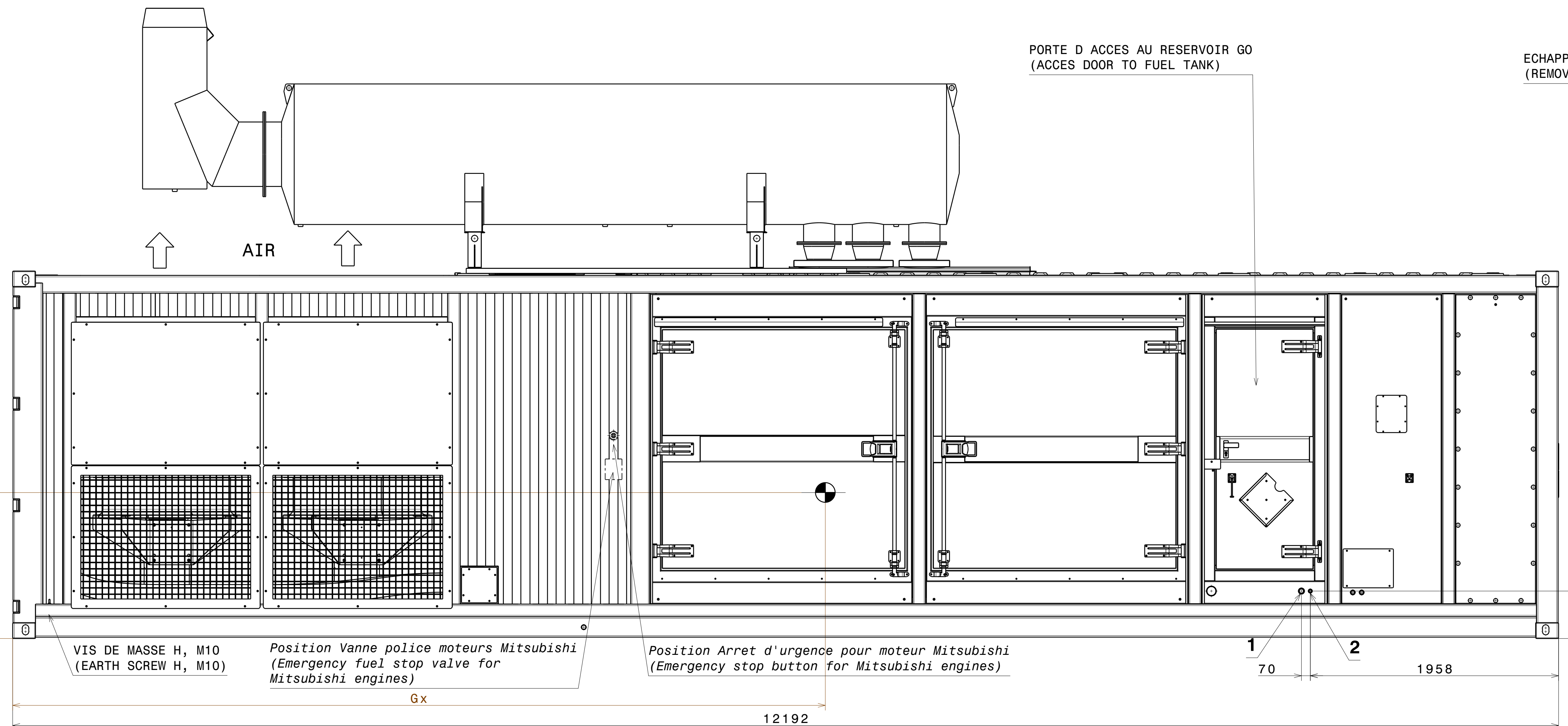
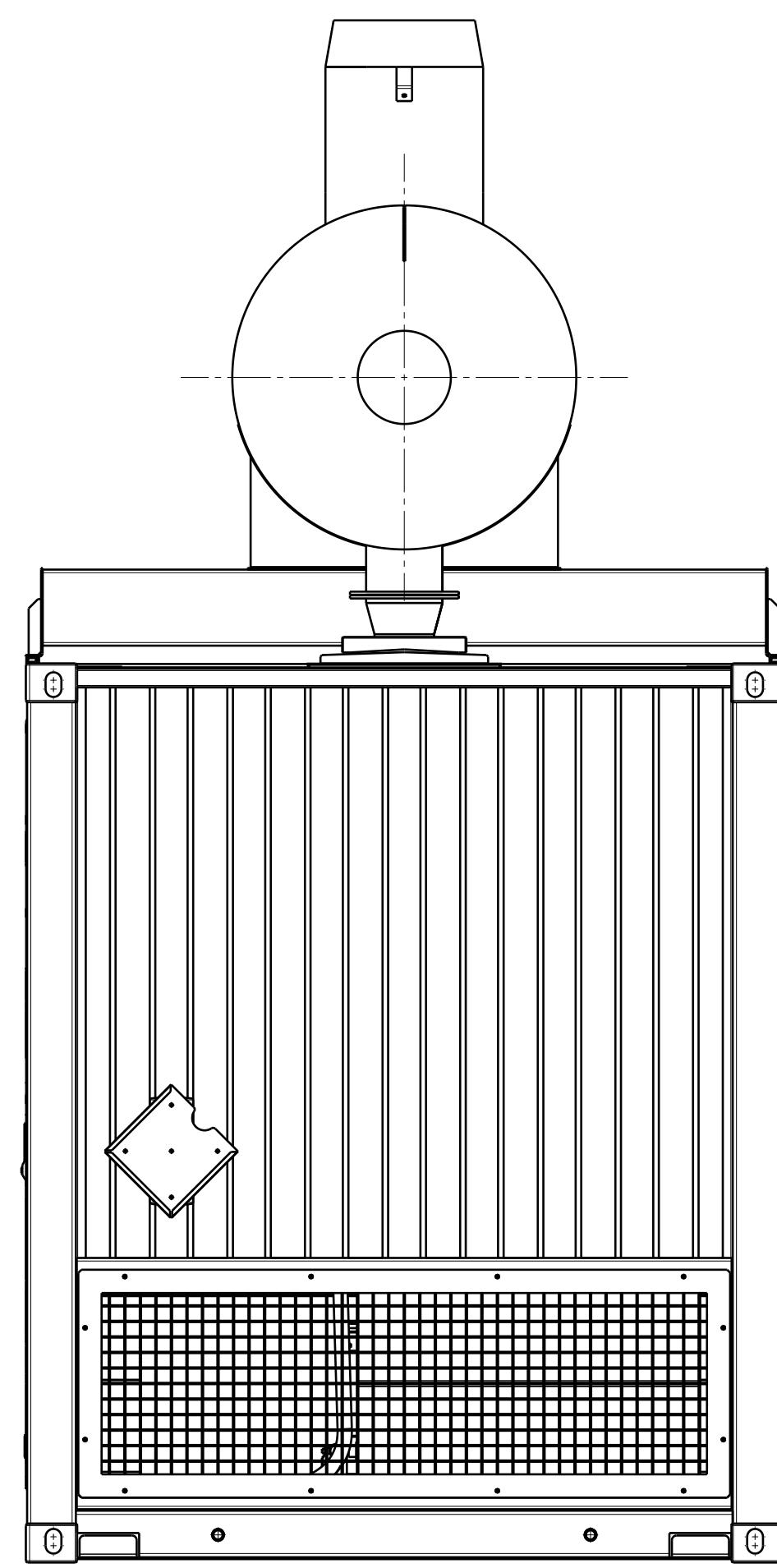
PORTE D ACCES AU DISJONCTEUR
(ACCESS DOOR TO CIRCUIT BREAKER)

SORTIE CABLES LATERALE BASSE
(LOW LATERAL CABLES OUTLET)

VIS DE MASSE H, M10
(EARTH SCREW H, M10)

SORTIE CABLES LATERALE BASSE
(LOW LATERAL CABLES OUTLET)

PORTE D ACCES AU DISJONCTEUR
(ACCESS DOOR TO CIRCUIT BREAKER)



ECHAPPEMENT DEMONTABLES POUR TRANSPORT
(REMOVABLE EXHAUST FOR TRANSPORT)

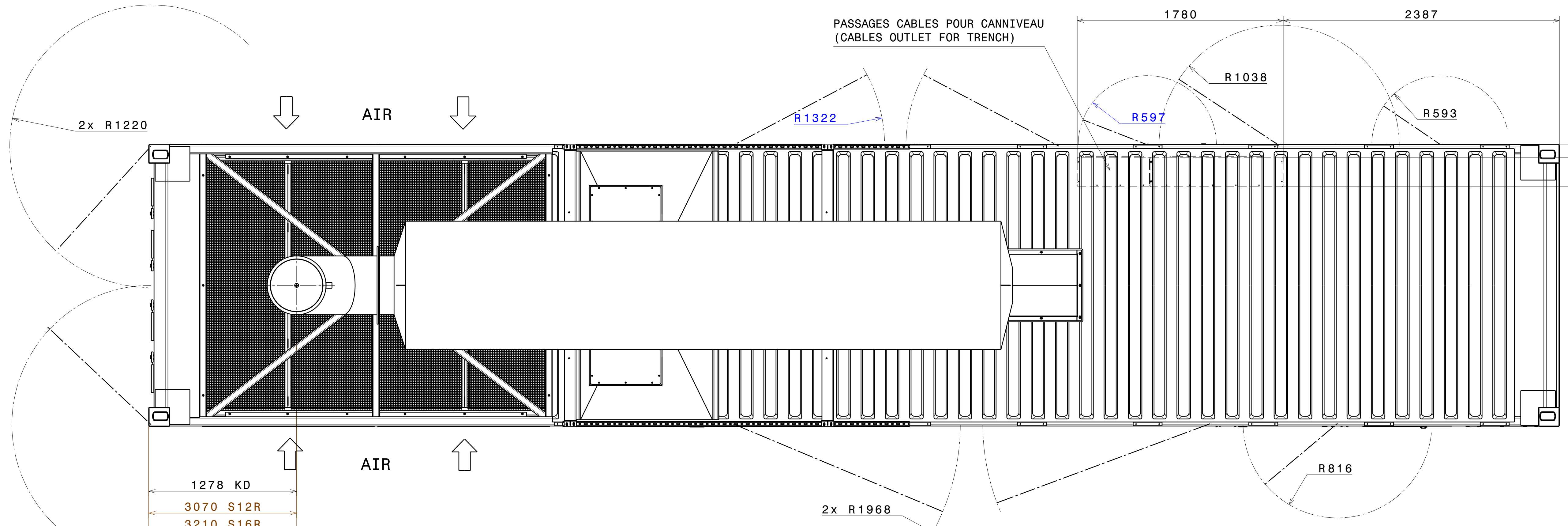
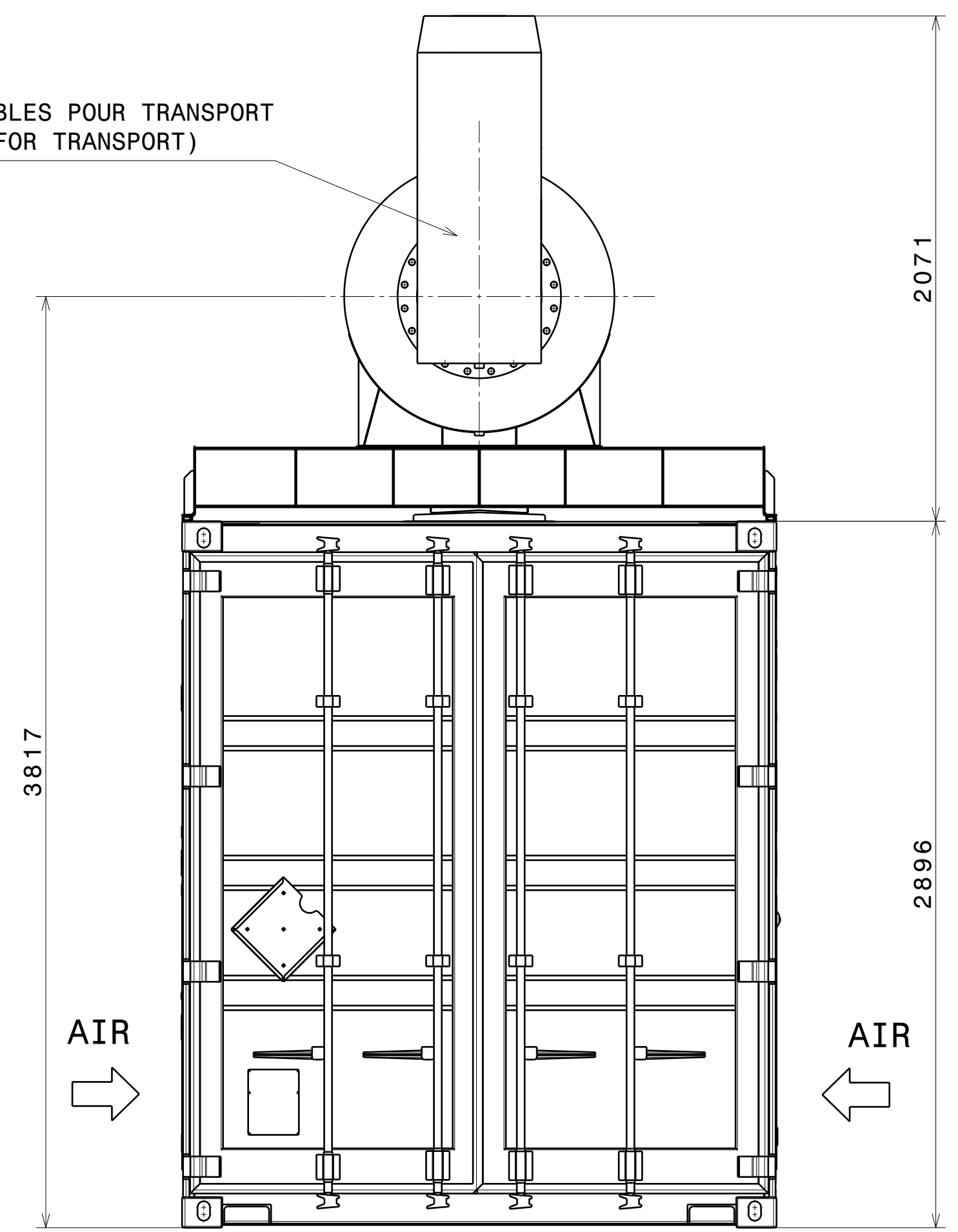
PORTE D ACCES AU RESERVOIR GO
(ACCESS DOOR TO FUEL TANK)

VIS DE MASSE H, M10
(EARTH SCREW H, M10)

Position Vanne police moteurs Mitsubishi
(Emergency fuel stop valve for Mitsubishi engines)

Position Arret d'urgence pour moteur Mitsubishi
(Emergency stop button for Mitsubishi engines)

1 2
70 1958



PASSAGES CABLES POUR CANNIVEAU
(CABLES OUTLET FOR TRENCH)

2x R1220

R1322

R597

R1038

R593

1780 2387

113

254

1278 KD

3070 S12R

3210 S16R

2x R1968

R816

Moteur Engine	Alternateur Generator	Masse(kg) Weight(lbs)		Centre de gravité - Odm Center of gravity - Wet	
		A vide/Dry	Odm/Wet	Gx(mm)	Gz(mm)
KD62V12	KH04400T	29420/64730	31000/68200	6300	1320
	KH04401T	29420/64730	31000/68200	6300	1320
	KH04970T	29670/65300	31160/68560	6340	1320
	KH05790T	30130/66300	31630/69600	6340	1320
	KH06930T	30500/67230	32000/70400	6410	1320
MI S12R-F1PTAW2	KH04450T	22770/50190	24500/54010	6260	1257
	KH05090T	23060/50820	24790/54650	6260	1254
MI S16R-F1PTAW2	KH04403T	25490/56100	27230/60000	6400	1220
	KH04973T	25490/56100	27230/60000	6400	1220

Tolérance sur masse: ±5%
(Weight allowance: ±5%)
Masse en version SI / réservoir 500L
(Weight in SI version / 500L tank)
OPTION SSI : +671 kg

VALID

1: RETOUR REMPLISSAGE AUTOMATIQUE VERS LA CUVE PRINCIPALE = 1.1/4" BSP TARAUDE
AUTOMATIC FUEL RETURN TO BULK TANK = BSP 1.1/4" TAPPED
2: ARRIVEE REMPLISSAGE AUTOMATIQUE DE LA CUVE PRINCIPALE = 3/4" BSP TARAUDE
AUTOMATIC FUEL FILLING FROM BULK TANK = BSP 3/4" TAPPED

Rev	Designation de la modification (Description of change)	Status (Status)	Date (Date)	Visa Dessiné par (Drawn by)	Date (Date)	Visa Vérificateur (Checked by)
A	Création du document (First issue)		09/10/16			
Matière (Material)	-					Format (Size) A0
Revêtement (Coating)	-					Echelle (Scale) 1/20
Tolérance (Tolerance)	ISO 2768-mK					Folio (Sheet) 1/1
Designation (Title)	CPU40 STANDARD - VUES EXTERIEURES (STANDARD CPU40 - OUTSIDE VIEWS)					Masse (Weight) Kg
			3-00-01-5099-01	Rev.: A		